

Recovery Education Unit present Guy Shennan A 2 day workshop on Solution Focussed Practice

Our Other Courses

Postgraduate Diploma,
Recovery in Mental Health
(Leading to MSc in Advancing
Professional Practice)
Recovery Focussed Family
Work
Recovery Values & Practice

Online Courses

Recovery in Mental Health,
An on-line Introduction
Mental Health Awareness

How do I apply?

Places are offered on a first
come first served basis and
are funded by Health
Education Yorkshire &
Humber Specialist Skills Post
Registration Development
(SSPRD) for staff and service
users in the Yorkshire and
Humber region.

WHO IS THIS FOR

This is a 2 day work shop for people who are interested in devel-
oping their specialist skills to offer short term solution focused
approaches in practice.

People should be working in a mental health setting (e.g. nurses
or social workers) and have direct contact with
service users.

Solution focused practice is based on a way of talking with
people that leads towards change. It originated in the world of
therapy but has long since expanded into all
contexts where a practitioner's job is to help an other.

The course will develop an understanding of the principles of
solution focused practice and introduce skills to use in practice.

Who Are We?

The Recovery Education Unit is based at Fulwood House in
Sheffield and is part of Sheffield Health and Social Care Trust.
Our academic team have a wide range of expertise, including
lived experience of mental health problems, which we use to de-
velop and provide education which is designed to challenge tradi-
tional notions and promote contemporary thinking about mental
health practice. We hope to equip people interested in mental
health with a framework to enable them to develop the skills,
knowledge and attitudes necessary to help people recover and to
influence recovery implementation within their area of interest.
All our courses are funded by Health Education Yorkshire &
Humber (Specialist Skills Development) Please contact us for
further information on how to apply.

Guy Shennan is an independent consult who uses solution
focused practice as a counsellor, coach, supervisor and group
worker. He also teaches, undertakes research and writes about
the solution focused approach. Guy has
provided training across a whole range of settings in the UK and
internationally, his book, Solution-Focused
Practice was published by Palgrave MacMillan in
September 2014

WHAT IS INCLUDED

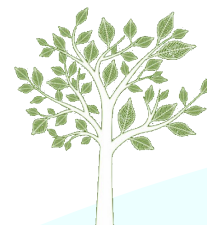
The workshop will:

Introduce the basic principles of
the solution focused approach

Provide opportunities to discuss
and practice the techniques

Consider applications to the
everyday work of course
members

Enable course members to bring
some of these skills into their
everyday practice



Recovery Education Unit

Contact Lynne Walker
Telephone: 0114 2263068
Email: Lynne.Walker@shsc.nhs.uk

Sheffield Health and Social Care
Trust,
Fulwood House,
Old Fulwood Road,
Sheffield

Please Contact us for More Information ▶ ▶ ▶

www.recoveryeducationonline.org